

# Medicaid Renewals in Kansas

Webinar Series  
Faith Communities



**COMMUNITY CARE  
NETWORK OF KANSAS**  
Health. Equity. Justice.

# Today's Agenda

- Welcome and Introductions
- **David Jordan**, President and CEO  
United Methodist Health Ministry Fund – Hutchinson, KS
- **Kate Gramlich**, Project Manager  
Cover Kansas – Topeka, KS
- **Katie Schoenhoff**, Director of Programs  
United Methodist Health Ministry Fund – Hutchinson, KS
- Questions and Answers



**COMMUNITY CARE  
NETWORK OF KANSAS**  
Health. Equity. Justice.

 United Methodist  
**HealthMinistryFund**

# Medicaid Renewals – Background

- KanCare – Kansas’ Medicaid/CHIP program – serves approximately 400,000, including children, low-income parents, and Kansans with disabilities.
- In some rural counties approximately 50% of children are members of KanCare.
- During COVID, Medicaid suspended the annual renewal process and lowered the eligibility requirements. The end of the public health emergency also means an end to these rules.
- This renewal process began in Kansas this spring.



**COMMUNITY CARE  
NETWORK OF KANSAS**  
Health. Equity. Justice.

 United Methodist  
**HealthMinistryFund**

# Medicaid Renewals – The Breakdown

## According to Kansas Action for Children:

Data breakdown, reported as of June 30, 2023, since the start of the unwinding process:

- **275,647 individuals sent a KanCare renewal letter**
- **29,012 individuals renewed** (including 18,492 in “family medical”)
- **7,432 individuals** (including 6,339 in “family medical”) **determined ineligible and their KanCare coverage was discontinued**
- **45,837 individuals** (including 40,005 in “family medical”) **had KanCare coverage discontinued for procedural reasons** but can re-enroll within the 90-day window review period
  - **62.3 percent** of those in the 90-day window **are children**

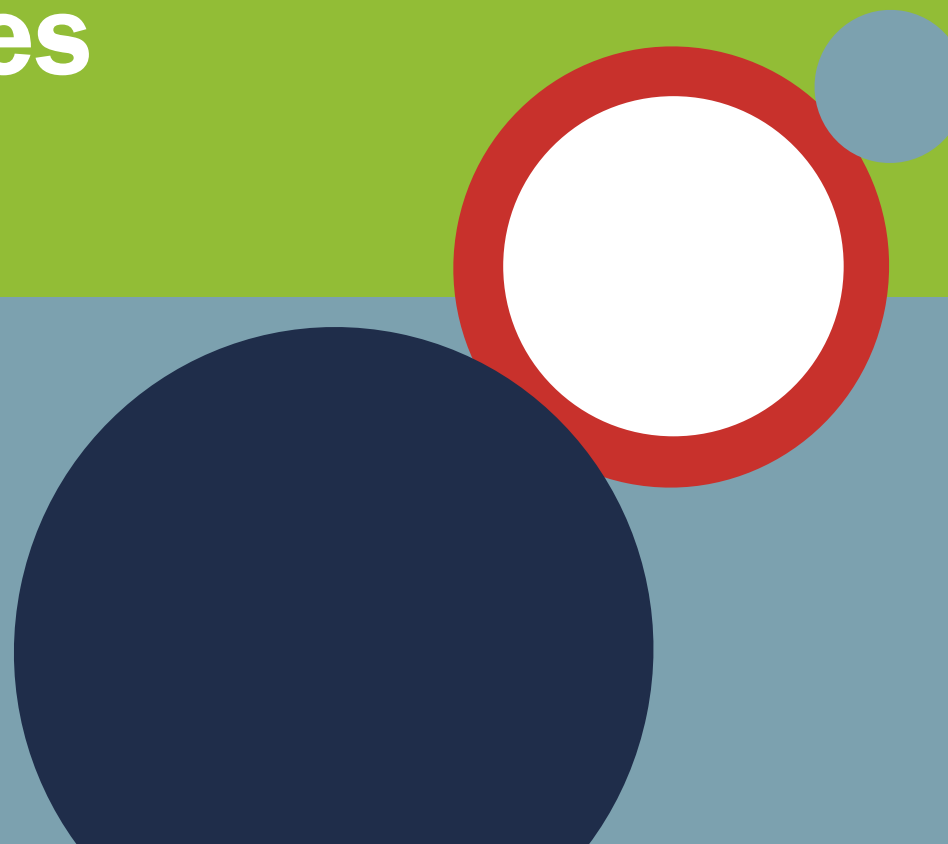


COMMUNITY CARE  
NETWORK OF KANSAS  
Health. Equity. Justice.

 United Methodist  
HealthMinistryFund

# Engaging Faith Communities

Katie Schoenhoff



# Medicaid Renewals – Faith Communities

Faith communities are a trusted messenger.

Ways your community can make an impact:

- Ministerial alliances
- Coordinate with local partners like hospitals, health centers, libraries, local food banks, schools
- Host outreach events
- Offer internet to the community

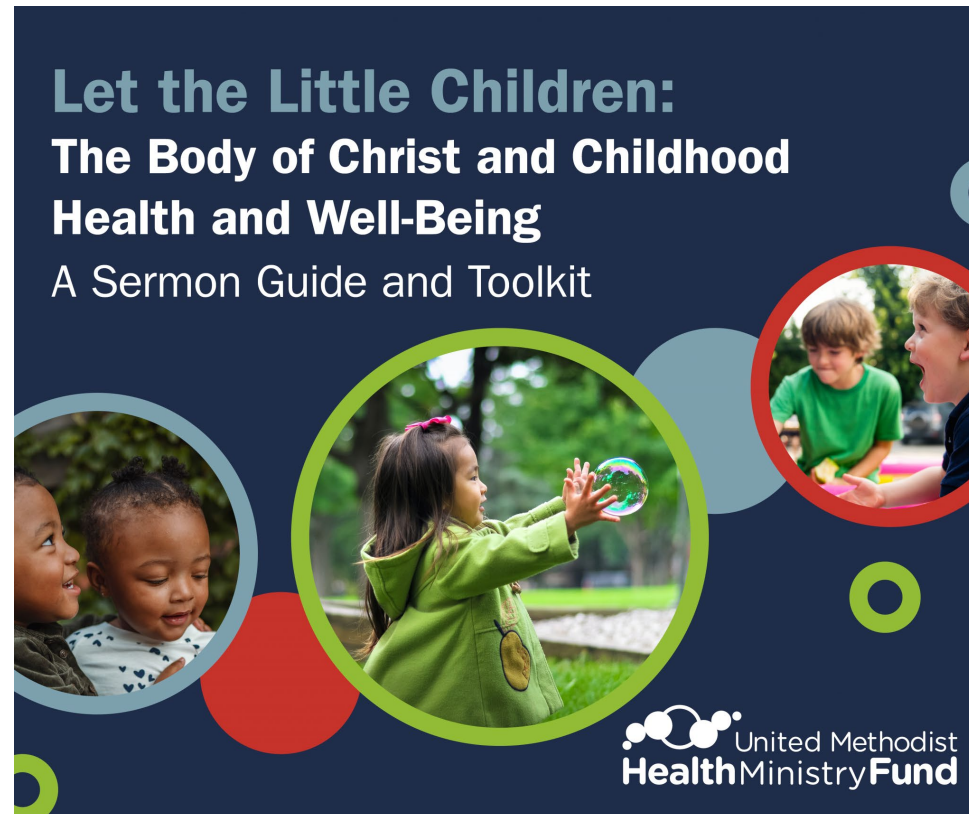


**COMMUNITY CARE  
NETWORK OF KANSAS**  
Health. Equity. Justice.

 United Methodist  
**HealthMinistryFund**

Unwinding Resources: [healthfund.org/KCR](https://healthfund.org/KCR)

## Sermon Guides – Let the Little Children – Week 2



## Unwinding Resources: [healthfund.org/KCR](https://healthfund.org/KCR) Social media tiles and church bulletin



Kansans are losing their healthcare coverage, we can help prevent it.

Access to care is essential for healthy families and communities. KanCare, our state's Medicaid program, covers more than 400,000 Kansans, including children and people with disabilities. As the COVID-19 emergency ended this spring, annual eligibility renewals resumed for the first time in three years. **As KanCare processes these renewals, outdated address information or failure to return forms is causing people to unexpectedly lose coverage.** Many Kansans are unaware of this challenge, or what to do.

With nearly 50% of Kansas kids enrolled in Medicaid, there's a lot at stake.

For people of faith, caring for the sick and ministering to ensure healthy individuals and communities is a core value. From the Parable of the Lost Sheep, we know that **God never leaves anyone behind.** As a faith community called to advocate for and serve the least among us, we care for one another and know that together we are stronger.

In the first half of 2023, more than 50,000 Kansans lost Medicaid coverage - and among those, nearly 2/3 are children. The good news? By sharing key tips with our friends and neighbors we can help prevent coverage loss:

- **Update your current mailing address, phone, email or other contact information with KanCare.** Visit [getcoveredkansas.org/kiera](https://getcoveredkansas.org/kiera) for tips and videos on updating your information through the KanCare website. Or call the KanCare Clearinghouse: 800-792-4884
- **Check your mail.** The KanCare Clearinghouse will mail you a letter about your KanCare or CHIP coverage, and whether you need to complete a renewal form. **If you get a renewal form, fill it out completely and return it right away.** This may help avoid a coverage gap.
- **If you've already lost coverage, there is a review process available. Call KanCare at 800-792-4844 for assistance.**
- **For those determined ineligible for KanCare during renewal, there may be other affordable coverage options. See [getcoveredkansas.org/](https://getcoveredkansas.org/) for information and free help from a certified navigator.**

Please share this information with your networks and community - together, we can all help make sure no Kansans unnecessarily lose their health coverage.

For more information and resources, visit [healthfund.org/KCR](https://healthfund.org/KCR)



For information and resources at [healthfund.org/KCR](https://healthfund.org/KCR)



This year, we can help Kansas children keep their Medicaid coverage.

Help your community **stay up to date with KanCare** to avoid losing coverage.

When we stand up in service for others, we live out our faith and **build strong and healthy communities and families.**

For more information and resources, visit [healthfund.org/KCR](https://healthfund.org/KCR)

The United Methodist HealthMinistryFund logo and a QR code are located at the bottom of the tile.

This year, Kansas children are at risk of losing their Medicaid coverage.

Help your community **stay up to date with KanCare** to avoid losing coverage.

When we stand up in service for others, we live out our faith and **build strong and healthy communities and families.**

For more information and resources, visit [healthfund.org/KCR](https://healthfund.org/KCR)

The United Methodist HealthMinistryFund logo and a QR code are located at the bottom of the tile.

**COMMUNITY CARE NETWORK OF KANSAS**  
Health. Equity. Justice.





# Resources for Faith Communities

Unwinding Resources: [healthfund.org/KCR](https://healthfund.org/KCR)

Faith Community Specific:

- American Cancer Society toolkit



**COMMUNITY CARE  
NETWORK OF KANSAS**  
Health. Equity. Justice.



# Medicaid and CHIP Renewals Webinar on Engaging Faith and Community Organizations

Join the Department of Health and Human Services (HHS) and the Centers for Medicare & Medicaid Services (CMS) for the August 23rd Medicaid and Children's Health Insurance Program (CHIP) Renewals webinar on engaging faith and community organizations. Topics discussed during this month's webinar will include:

- Review of materials faith and community organizations can use to share information about Medicaid and CHIP renewals, including a new Faith-based Communications Toolkit
- Presentation on best practices for faith and community groups to reach people with Medicaid and CHIP in their community
- Updates on CMS's work related to Medicaid and CHIP renewals and other recent releases

**When:** Wednesday, August 23, 2023

**Time:** 12:00-1:00 PM ET

**RSVP:** [Click here.](#)

Please send all questions to [PARTNERSHIP@cms.hhs.gov](mailto:PARTNERSHIP@cms.hhs.gov).



**COMMUNITY CARE  
NETWORK OF KANSAS**  
Health. Equity. Justice.

 United Methodist  
**HealthMinistryFund**



**COMMUNITY CARE  
NETWORK OF KANSAS**  
Health. Equity. Justice.

## Next Steps

To watch this replay and for additional resources:

[HealthFund.org/KCR](https://HealthFund.org/KCR)

## Questions

