

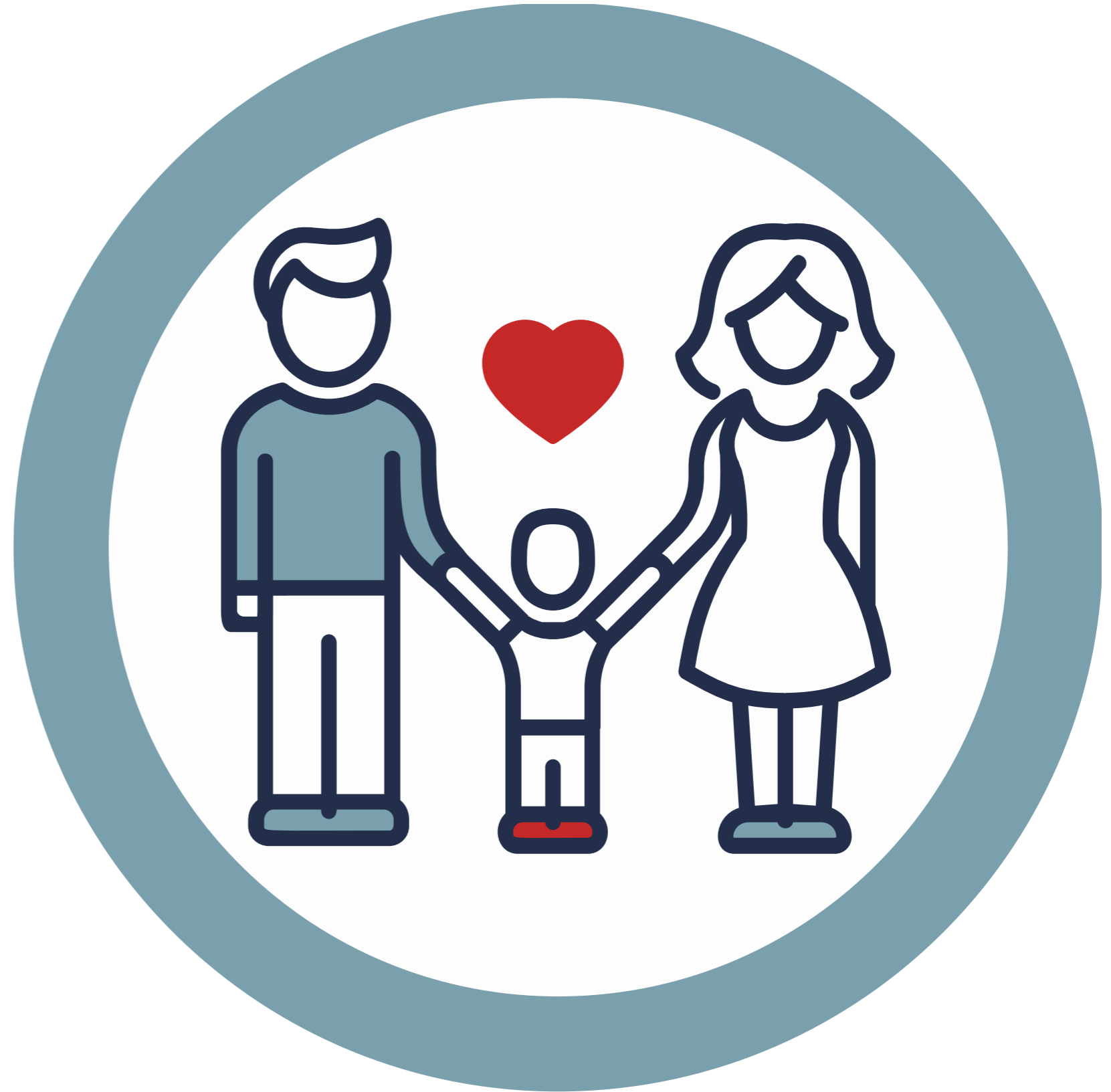
North Carolina Early Childhood Learning Trip

House Appropriations Committee
January 23, 2020



EARLY CHILDHOOD DEVELOPMENT

- Ensure children are physically, mentally, and socially healthy and go to school ready to learn
- Investments in early childhood interventions can have a ROI of 7:1



Early Childhood Development

- Young Children's Mental Health through supporting 13 regional ASQ:SE/maternal depression screening projects (2011- present)
- Breastfeeding support through maternity care practices and support of state and local efforts (2009- present)
- Support of ABC project utilizing evidence-based home visiting program targeting children 6-24 month at high risk to the effects of toxic stress

North Carolina Trip Attendees

Secretary Laura Howard, Department of Children and Families/ Kansas Department of Aging and Disability Services

Senator Dinah Sykes

Representative Monica Murnan

Representative. Troy Waymaster

Representative Susan Concannon

Melissa Rooker, Children's Cabinet

Jackie Counts, KU CPPR

Rebekah Gaston, Department of Children and Families

Karen Beckerman, Department of Children and Families

Amanda Petersen, Kansas Department of Education

Ashley Jones-Wisner, Kansas Department of Health and Environment

Liz Dunn, Kansas Department of Health and Environment

Deanna Van Hersh, Kansas Health Foundation

Kristi Zukovich, Kansas Health Foundation

Betsy Wearing, Dane G. Hansen Foundation

Katie Schoenhoff, UMHMF

David Jordan, UMHMF

Bailey Stiggins, BowerComm



NC Early Childhood System

Public

- **Department of Health and Human Services**
 - Division of Early Education & Care
 - Division of Public Health
 - Division of Mental Health
 - Division of Medical Assistance
- **Office of School Readiness**
- **Department of Public Instruction**
 - **Head Start**

Private

- **NC Partnership for Children (NPO)**
 - **75 local partnerships across the state's 100 counties**

***Funded through state appropriation, federal dollars and private local fundraising**

5 Takeaways for Kansas



#1 – Bipartisan commitment to early childhood

State-wide bipartisan commitment to support and fund early childhood programming

- Exemplified through the funding of 75 early childhood “hubs”/local partnerships
 - Approximately one per county, though some serve multiple counties.
- Recognition that early childhood programs are a feeder to businesses and central to business competitiveness –both in terms of workforce readiness and to recruiting new businesses

About the “Hubs”/Local Partnerships

- Serve as resource and referral networks
- Comprehensive programming for children 0-8
- Business leaders, local legislators, schools, and parents are bought in to the system.
- Everyone’s children use services
 - Businesses and community members serve on the board
 - Locals support with donations/fundraising (approximately 8-10% of budget comes from local support)
 - Funding and support maintained as a result of local advocacy catalyzed by hubs

True collaboration and partnership with the schools

- “We make sure our kids are ready for schools, and our schools are ready for kids.”
- Early Childhood focused on learning measures instead of test scores

#2 – Early childhood is central to all state planning and policy efforts

Beginning in the 1970's Governor Hunt began requiring the incorporation of Early Childhood

- He mentioned it in every speech, put it at the top of every piece of paper
- He required cabinet members to include it on every agenda and report, made sure everyone had the early childhood plan displayed in their offices
- “Everyone is an early childhood stakeholder”

Commitment

- The system is maintained because it's engrained
- Early childhood system seen as critical economic development and maintaining business friendly climate

Creation of Early Childhood Action Plan

- Provides a framework for action across public and private stakeholders
- Measurable outcomes
- 10 data informed goals
- Executive order by Governor Roy Cooper in 2018



#3 – Use Incentives to Achieve Quality Workforce & Care Across Early Childhood Settings

North Carolina understands that Quality = Funding

Programs like T.E.A.C.H., WAGE\$ and Infant Toddler Educator Award\$ demonstrate commitment

- T.E.A.C.H. offers scholarships for those pursuing higher education to become early childhood educators
- WAGE\$ and Infant Toddler Educator Award\$ are education-based salary supplements for low-paid teachers, directors and family child care providers working with children 0-5.
- Kansas utilized T.E.A.C.H. and WAGE\$ in past
- New infant/toddler subsidy is beginning to encourage providers to work with younger children

Licensure process incentivizes quality

- 1-5 Star Rating System for childcare centers/in-home providers
- Funding for subsidies is tied to quality centers



#4 – Universal Home Visiting

NC aiming to increase utilization of home-visiting

- Funding from local partnerships/hubs
- Medicaid waiver also provides funding/reimbursement to support services
- Comprehensive referral system
- Alignment with other programs and services
- Limited state appropriations (just Family Connects)

Duke's Family Connects Program (Pilot)

- Nurses schedule a home visit before discharge from the hospital; visit 3 weeks post-partum
 - 80% take up rate in three counties, and available to all families
 - Not based on income
- Nurse can refer, and provide linkages to other community supports
- Outcomes – 44% lower rates of child maltreatment investigations; Rate of maternal health problems is 18% lower
- Oregon exploring use of private dollars, private payers and Medicaid to support program

#5 – Maximizing Medicaid Supports for Early Childhood

Prioritizing early childhood as part of Medicaid & holding MCOs accountable

Medicaid services :

- Universal Screenings
- Integrating with Social Determinates of Health including social supports
- Homevisiting
- Care coordination

Data Systems:

- Integration within EMR and streamlining screening and referral tools
- Care coordination
- Billing
- Full inventory of needs and utilization
- Track community needs and creates feedback loop

Sustainability

- How do you maximize federal dollars – Medicaid key funding source
- How do you braid funding with other state, local, and federal sources

Alignment with Kansas Early Childhood Planning

- **Cross-agency team focused on improving early childhood system and developing action plan, including public private partnerships**
- **Exploring how to scale universal home visiting**
- **Piloting quality improvement in early care settings**
- **Building onto screening referral tools in use in Kansas**
- **And, more.**

Recent Health Fund Supported Early Childhood Resources

- **Furthering Federal Funding to Bolster Outcomes for Kansas Kids,** https://kac.org/wp-content/uploads/2019/04/FedFunding_4.pdf
- **The Benefits of Home Visiting,** https://kac.org/wp-content/uploads/2019/04/homevisit_328.pdf
- **Maximizing Medicaid for Kansas Kids,** <https://kac.org/wp-content/uploads/2019/03/Medicaid-3.20.pdf>.
- **Early Childhood Education in Kansas: Challenges and Opportunities,** <https://kac.org/wp-content/uploads/2019/03/Childcare-3.11.pdf>

Contact information:

David Jordan

President & CEO

620.662.8586

david@healthfund.org

